



TRAINING AND DIALOGUE PROGRAMS

**GENERAL INFORMATION ON
GROUP TRAINING ON OPERATION AND MAINTENANCE OF
URBAN WATER SUPPLY SYSTEM**

集團研修「都市上水道維持管理」

JFY 2010

<Type: Trainers Training / 類型: 人材育成普及型 >

NO. J10-00814

From April 2010 to October 2010

Phases in Japan: From May 24th, 2010 to July 24th 2010

This information pertains to one of the Training and Dialogue Programs of the Japan International Cooperation Agency (JICA), which shall be implemented as part of the Official Development Assistance of the Government of Japan based on bilateral agreement between both Governments.

I. Concept

Background

It has been recognized that more than 1.1 billion people around the world have no access to safe drinking water.

In Millennium Development Goals (MDGs) target to halve, by 2015, the proportion of the people who are unable to reach or to afford safe drinking water. In March 2003, Japan hosted the Third World Water Forum. Participants identified water governance, capacity building, financing and participation as some of the major issues for the water crisis. In other words, they recognized the need for an integrated approach.

Osaka City Waterworks Bureau (OMWB) has accumulated various experiences in operation and maintenance of urban water supply system, through the trial and error in the modernization and recovery process after WWII. The accumulated technique and knowledge shall contribute to secure the safe and sustainable water supply in developing countries.

For What

This program aims to contribute the improvement of the techniques and knowledge of **counterpart organizations and their related organizations of Japan's bilateral cooperation program.**

To whom

Engineers in charge of operation and maintenance of urban water supply system **in counterpart organizations and their related organizations of Japan's bilateral cooperation program**

How

- (1) Participating organizations are required to have discussions about the issues on operation and maintenance of urban water supply system in the organizations, and give the participants clear mission or assignment to acquire in the program, before their departure.
- (2) Participants will learn and observe the urban water supply system in Osaka City, and analyze what can be applied to their organization in order to improve the issues of the organization.
- (3) Participating organizations are required to have a program by their own initiative to disseminate the technique and knowledge brought back by the participants.

II. Description

1. Title (J-No.): Operation and Maintenance of Urban Water Supply System

(J10-00814)

2. Training Period

(1) Duration of whole program: April, 2010 to October, 2010

(2) Preliminary Phase(in a participant's home country): April, 2010

(3) Core Phase in Japan: 24th May, 2010 ~ 24th July, 2010

(4) Finalization Phase(in a participant's home country): August, 2010 ~ October, 2010

3. Target Countries: Bangladesh, Bolivia, Cambodia, Democratic Republic of the Congo, Pakistan, Philippines, Turkey, Zambia,

4. Overall Goal:

Capacity for operation and maintenance of urban water supply system in counterpart organizations or their related organizations of Japan's bilateral cooperation program will be improved.

5. Outcome:

Applicable techniques or knowledge acquired in the program will be shared among engineers in participating organizations.

6 .Eligible / Target Organization : Counterpart organizations or their related organizations of Japan's bilateral cooperation program.

7 . Total Number of Participants : 12

8 . Language to be used in this program : English (Including Japanese with English interpretation.)

9. Contents:

This program consists of the following components. Details on each component are given below:

(1) Preliminary Phase in a participant's home country (April 2010) <i>Participating organizations make required preparation for the Program in the respective country.</i>		
Output	Contents	Method
1) Issues of participating organizations and what participants should acquire in training in Japan will be clarified.	(1) Preliminary discussion in the organizations	Discussion in the organization
	(2) To give participants clear assignment and tasks for the training program.	Discussion in the organization
	(3) Submission of Inception Report	Report preparation

All the participants are required to present the inception report in the core phase in Japan. It is advisable for participants to prepare audio-visual aids such as slides, pictures, maps, PowerPoint, etc., for more efficient presentation.

(2) Core Phase in Japan (May 24th 2010 to July 24th, 2010) Participants dispatched by the organizations attend the Program implemented in
--

Japan.		
Output	Contents	Method
2) Participants will be able to explain operation and maintenance techniques of pipelines and service installations utilized in OMWB and other organizations.	(1) Maintenance of Pipelines (outline, leakage detection, attachments and joints, piping practice, management of drawings and data)	Lecture/Practice
	(2) Maintenance of Service installations (outline, water meters, piping and branching, activities of service offices)	Lecture/Practice
	(3) Review of the learning	Discussion
3) Participants will be able to explain operation and maintenance techniques of Intake, Treatment and Distribution Facilities utilized in OMWB and other organizations	(1) operation and maintenance of Intake, Treatment and Distribution Facilities	Lecture/Practice /Observation
	(2)Water Quality Control	Lecture/Practice /Observation
	(3) Maintenance of mechanical, electrical and measuring instruments	Lecture/Practice
	(4) Review of the learning	Discussion
4) Plan to disseminate operation and maintenance techniques which is applicable to participating organizations will be formulated	(1) Plan formulation	Self-learning/Discussion
	(2) Plan presentation	Presentation/ Demonstration

(3)Finalization Phase in a participant's home country		
<i>Participating organizations produce final outputs by making use of results brought back by participants. This phase marks the end of the Program.</i>		
<i>Participating organizations are required to submit progress report by October 2010.</i>		
Output	Contents	Method
Dissemination program will be implemented in participating organizations within four months after participants' return.	Implementation of dissemination program	Dissemination program
	Progress Report on dissemination program	Submission of the report to JICA local offices

*** In case the final report is not submitted from any organization by 31st October, 2010, JICA may suspend acceptance of participants from that organization in the future.**

10: Course Structure

(Before coming to Japan)

Issue analysis in applying organizations

Applying organizations are required to analyze issues in their organizations and make clear objectives to participate in the training.

*The organizations are also required to make a commitment to formulate and implement the dissemination program after completion of the training program in Japan.



(During stay in Japan)

Inception Report Presentation

- Issues in the participating organization
- What the participant expect to learn in the training



Maintenance of Pipelines

Maintenance

Discussion on Service Installation and Distribution Issues



General Information on Water Supply Systems

- Waterworks in Japan
- Water supply systems of Osaka City

Operation and Maintenance of Intake, Treatment and Distribution Facilities

Maintenance of Mechanical, Electrical and Measuring Instruments

Water Quality Control

Discussion on Purification Related Issues



Formulation of Dissemination plan

Formulate a plan to disseminate techniques learnt in Japan which can be utilized to improve the issues in the participating organization



(after the training in Japan)

Implementation of the dissemination plan

*Participants' organizations are required to submit the progress report by December, 2009.

11. Course Schedule: Please refer to the schedule of JFY 2009. (ANNEX III) The detailed schedule of JFY2010 will be decided later.

12. Intensive Japanese Class: Japanese Intensive Language Course will be held as follows.

May 31st 2010 to June 4th 2010

13. Dissemination Plan: Training participants are required to formulate "Dissemination Plan" in the training in Japan and to implement the plan after their return by following manners as one of the outputs of the training program.

(1) Objective of the plan: To improve the technical issues of participating organizations by disseminate knowledge or information learnt in the training program.

(2) Target of the plan: Engineers or technicians in the participating organization or its related organizations.

(3) Contents to be covered in the plan:

- a) Related technical issues in the participating organization
- b) Knowledge or information applicable to improve the issues
- c) Relationship between the knowledge or information and the issues of the participating organization. (How it can be applied.)
- d) Goal to be achieved by the dissemination program
- e) Target of the dissemination program
- f) Dissemination method

g) Evaluation method of achievement of the goal

(4) Main practitioner of the plan: Participants

(5) Role of participating organization:

- a) To select candidates who can plan and implement the plan by their own initiative.
- b) To support dissemination program

***In case the final report is not submitted from any organization by 31st October, 2010, JICA may suspend acceptance of participants from that organization in the future.**

III. Conditions and Procedures for Application

1. Expectations for the Participating Organizations:

- (1) This program is designed primarily for counterpart organizations of Japan's bilateral organizations that intend to address specific issues or problems identified in their operation. Participating organizations are expected to use the project for those specific purposes.
- (2) This program is enriched with contents and facilitation schemes specially developed in collaboration with relevant prominent organizations in Japan. These special features enable the project to meet specific requirements of applying organizations and effectively facilitate them toward solutions for the issues and problems.
- (3) As this program is designed to facilitate organizations to come up with concrete solutions for their issues, participating organizations are expected to make due preparation before dispatching their participants to Japan by carrying out the activities of the Preliminary Phase described in section II-9.
- (4) Participating organizations are also expected to make the best use of the results achieved by their participants in Japan by carrying out the activities of the Finalization Phase described in section II-9.

2. Nominee Qualifications:

Applying Organizations are expected to select nominees who meet the following qualifications.

(1) Essential Qualifications

- 1) To be engineers responsible for operation and maintenance of urban water supply
- 2) To be currently engaged in urban water supply field offices, such as water treatment plants, operation and maintenance offices, and have at least five (5) years' practical experience in that area,
- 3) To have a strong commitment and capacity to disseminate acquired techniques and knowledge after return
- 4) Language: have a competent command of spoken and written English which is equal to TOEFL CBT 250 or more (This workshop includes active participation in discussions, action plan (interim report) development, thus requires high competence of English ability. Please attach an official certificate for English ability such as TOEFL, TOEIC etc, if possible)
- 5) Health: must be in good health, both physically and mentally, to participate in the Program in Japan
- 6) Must not be serving any form of military service.

(2) Recommendable Qualifications

Age: be under forty-five (45) years of age,

3. Required Documents for Application

(1) Application Form: The Application Form is attached to this General Information.

(2) Nominee's English Score Sheet: to be submitted with the application form. If you have any official documentation of English ability (e.g., TOEFL, TOEIC, IELTS), please attach it (or a copy) to the application form.

(3) Inception Report and Questionnaire: to be submitted with the application form. Please refer to the ANNEX I and II of this General Information, and submit it **along with the application Form**. Applications without the inception report and the questionnaire will not be accepted.

Presentation of the report: Each selected participant is required to make a presentation about technical issues of his/her own organization and what he/she expects to learn in the training in Japan.

4. Procedure for Application and Selection :

(1) Submitting the Application Documents:

Closing date for application to the JICA Center in JAPAN: **31st March, 2010**

Note: Please confirm the closing date set by the respective country's JICA office or Embassy of Japan of your country to meet the final date in Japan.

(2) Selection:

After receiving the document(s) through due administrative procedures in the respective government, the respective country's JICA office (or Japanese Embassy) shall conduct screenings, and send the documents to the JICA Center in charge in Japan, which organizes this project. Selection shall be made by the JICA Center in consultation with the organizations concerned in Japan based on submitted documents according to qualifications.

The organization with a detailed plan to utilize the opportunity of this program will be highly valued in the selection.

(3) Notice of Acceptance

Notification of results shall be made by the respective country's JICA office (or Embassy of Japan) to the respective Government by **not later than 20th April, 2010.**

5. Conditions for Attendance:

(1) to observe the schedule of the program,

(2) not to change the program subjects or extend the period of stay in Japan,

- (3)** not to bring any members of their family,
- (4)** to return to their home countries at the end of the program in Japan according to the travel schedule designated by JICA,
- (5)** to refrain from engaging in political activities, or any form of employment for profit or gain,
- (6)** to observe the rules and regulations of their place of accommodation and not to change the accommodation designated by JICA, and
- (7)** to participate in the whole program including a preparatory phase prior to the program in Japan. Applying organizations, after receiving notice of acceptance for their nominees, are expected to carry out the actions described in section II-9(1).

IV. Administrative Arrangements

1. Organizer:

(1) **Name:** JICA Osaka

(2) **Contact:** Training Program Division, JICA Osaka (osicct1@jica.go.jp)

2. Implementing Partner:

(1) **Name:** Osaka City Waterworks Bureau

(2) **URL:** <http://www.water.city.osaka.jp/english/index.html>

Remark:

The city of Osaka is situated at the heart of the Japanese archipelago. It has been developed over the centuries as a center of Japanese political and economic life. The city's water supply system became only the fourth modern supply system in the country when it was inaugurated in November 1895. Numerous expansion programs in line with the growth of the city's area and population have since brought the system's supply capacity up to its current daily level of 2.43 million m³. The system's organizational structure includes a head office, branch offices (customer service centers, water rate collection centers, pipe laying, maintenance units, etc.), water treatment works, and engineering offices (for maintenance and new construction projects), giving a total employee figure of approximately 2,180.

3. Travel to Japan:

(1) **Air Ticket:** The cost of a round-trip ticket between an international airport designated by JICA and Japan will be borne by JICA.

(2) **Travel Insurance:** Term of Insurance: From arrival to departure in Japan. *the traveling time outside Japan shall not be covered.

4. Accommodation in Japan:

JICA will arrange the following accommodations for the participants in Japan:

JICA Centre international de Osaka (JICA Osaka)

Adresse : 25-1 Nishi-Toyokawa-cho, Ibaraki-shi, Osaka 567-0058,
Japan

TEL : 81(*)-72(**)-641-6900 FAX : 81(*)-72(**)-641-6910

(where "81" is the country code for Japan, and "3" is the local area code)

If there is no vacancy at JICA Osaka, JICA will arrange alternative accommodations for the participants. Please refer to facility guide of JICA Osaka at its URL, <http://www.jica.go.jp/branch/osic/english/training/index.html>

5. Expenses:

The following expenses will be provided for the participants by JICA:

(1) Allowances for accommodation, living expenses, outfit, and shipping

(2) Expenses for study tours (basically in the form of train tickets.

(3) Free medical care for participants who become ill after arriving in Japan (costs related to pre-existing illness, pregnancy, or dental treatment are not included)

(4) Expenses for program implementation, including materials

For more details, please see p. 9-16 of the brochure for participants titled “KENSU-IN GUIDE BOOK,” which will be given to the selected participants before (or at the time of) the pre-departure orientation.

6. Pre-departure Orientation:

A pre-departure orientation will be held at the respective country’s JICA office (or Japanese Embassy), to provide participants with details on travel to Japan, conditions of the workshop, and other matters.

ANNEX I

Operation and Maintenance of Urban Water Supply Systems

Inception Report

Name : _____

Country : _____

*In the core phase in Japan, participants will make a presentation on the Inception Report. It is advisable for participants to prepare audio-visual aids such as slides, pictures, maps, PowerPoint, etc., for more efficient presentation.

1. General information on your city/town
(geographical features, total population, social and economic status, climate, etc.)

2. Name of organization : (organization chart, number of employees, etc)

3. Please describe the relationship of your organization with Japan's bilateral cooperation program. (ex: Counterpart organization of Technical Cooperation Program titled "xxxxxx".)
*This training program targets on counterpart organizations or their related organizations of Japan's bilateral cooperation program only.

4. Your present position

5. Technical issues your organization has and subjects your organization particularly requires you to learn in the training course.
(Please have a discussion in your organization and fill the chart on the next page with the consensus of your organization.)
*You are advised not to focus on financial issues, but to technical issues, since this training program shall not contribute to improve financial issues.

	Technical Issues	Objective Data to suggest issues	Expectation to the training
*organization			
*water resource *water pollution *water quality control			
*water treatment facilities			
*mechanical and electrical facilities *measuring equipment			
*pipelines			

		2. 3.
B.	Main sources of water pollution	<input type="checkbox"/> 1.household wastewater <input type="checkbox"/> 2.industrial wastewater <input type="checkbox"/> 3.livestock wastewater <input type="checkbox"/> 4.other ()
C.	Water quality control measure	<input type="checkbox"/> 1.introduction of sewage system <input type="checkbox"/> 2.separate wastewater treatment <input type="checkbox"/> 3.wastewater quality regulations <input type="checkbox"/> 4.protection of water resource (such as prohibiting entry or waste discharge to water resource areas) <input type="checkbox"/> 5.other ()

(4) Intake Facilities

A.	Intake volume	<input type="checkbox"/> 1.surface water m ³ /day <input type="checkbox"/> 2.ground water m ³ /day <input type="checkbox"/> 3.dam m ³ /day <input type="checkbox"/> 4.other m ³ /day
B.	Intake facilities	
	1) Intake type	<input type="checkbox"/> 1.intake tower <input type="checkbox"/> 2.intake weir <input type="checkbox"/> 3.intake gate <input type="checkbox"/> 4.pump <input type="checkbox"/> 5.other ()
	2) Raw water main	<input type="checkbox"/> 1.intake pipe <input type="checkbox"/> 2.intake conduit <input type="checkbox"/> 3.other ()
	3) Grit chamber	<input type="checkbox"/> 1.exist <input type="checkbox"/> 2.not exist

(5) Treatment Facilities

A.	Number of treatment plants	
B.	Capacity	m ³ /day
C.	Sedimentation type	<input type="checkbox"/> 1.high rate coagulo-sedimentation <input type="checkbox"/> 2.horizontal flow type sedimentation <input type="checkbox"/> 3.slant-board type sedimentation
D.	Filtration type	<input type="checkbox"/> 1.rapid sand filtration (gravity system/pressure system) <input type="checkbox"/> 2.slow sand filtration
E.	Filter media	<input type="checkbox"/> 1.sand (cm thick) <input type="checkbox"/> 2.gravel (cm thick) <input type="checkbox"/> 3.anthracite (cm thick) <input type="checkbox"/> 4.other (cm thick)
G.	Coagulant	<input type="checkbox"/> 1.aluminum sulfate (solid/liquid) <input type="checkbox"/> 2.poly aluminum chloride <input type="checkbox"/> 3.other ()
H.	Alkali	<input type="checkbox"/> 1.caustic soda <input type="checkbox"/> 2.soda ash <input type="checkbox"/> 3.slaked lime
I.	Disinfectant	<input type="checkbox"/> 1.liquid chlorine

	3) Use	1.raw water () units 2.transmission () units 3.distribution () units 4.other () units
	4) Manufacturer	<input type="checkbox"/> 1.domestic manufacturer <input type="checkbox"/> 2.foreign manufacturer
	5) Staff training facilities	<input type="checkbox"/> 1.exist <input type="checkbox"/> 2.not exist
E.	Measuring equipment	
	1) Water level gauge Type	() units <input type="checkbox"/> 1.immersion <input type="checkbox"/> 2.pressure <input type="checkbox"/> 3.float
	2) Flowmeter Type	() units <input type="checkbox"/> 1.ultrasonic <input type="checkbox"/> 2.electromagnetic <input type="checkbox"/> 3.Venturi tube or Orifice
	3) Measurement type	<input type="checkbox"/> 1.analog <input type="checkbox"/> 2.digital

(7) Water Quality

A. Water Quality Data

raw water

finished water

1) Turbidity

(NTU or Kaolin turbidity unit)

2) Color (Pt-Co unit or others)

3) pH

4) Iron (mg/l)

5) Manganese (mg/l)

6) Hardness (mg/l)

7) Ammonia (mg/l)

8) Nitrite (mg/l)

9) KMnO4 consumption (mg/l)

10) BOD (mg/l)

B. Water Quality Monitoring System

1)	Water quality standards	<input type="checkbox"/> 1.yes (set by) <input type="checkbox"/> 2.no
2)	Laboratory staff and facilities for monitoring	<input type="checkbox"/> 1.own facilities (number of staff) <input type="checkbox"/> 2.subcontracted to other organizations
3)	Monitoring points and measuring frequency in treatment process	<input type="checkbox"/> 1.raw water(times/day,week,month) <input type="checkbox"/> 2.settled water(times/day,week,month) <input type="checkbox"/> 3.filtered water (times/day,week,month) <input type="checkbox"/> 4.finished water (times/day,week,month)

4)	Monitoring stations and frequency on tap water	<input type="checkbox"/> 1.number of stations () <input type="checkbox"/> 2.measuring frequency (times/day,week,month)
5)	Major laboratory equipment	1. 2.

(8) Maintenance of Pipelines

A. Length of pipelines by diameter

1) raw water pipelines

Ø mm _____ km

Ø mm _____ km

Ø mm _____ km

2) transmission pipelines

Ø mm _____ km

Ø mm _____ km

Ø mm _____ km

3) distribution pipelines

Ø mm _____ km

Ø mm _____ km

Ø mm _____ km

Ø mm _____ km

Ø mm _____ km

B. Length of pipelines by material

1) grey cast iron pipe _____ km

2) ductile iron pipe _____ km

3) galvanized iron pipe _____ km

4) steel pipe _____ km

5) asbestos cement pipe _____ km

6) concrete pipe _____ km

7) PVC pipe _____ km

8) other _____ km

C.	Type of internal lining	
	1) grey cast iron pipe	<input type="checkbox"/> 1.Cement <input type="checkbox"/> 2.Epoxy resin <input type="checkbox"/> 3.Others <input type="checkbox"/> 4.None
	2) ductile iron pipe	<input type="checkbox"/> 1.Cement <input type="checkbox"/> 2.Epoxy resin <input type="checkbox"/> 3.Others <input type="checkbox"/> 4.None
	3) galvanized iron pipe	<input type="checkbox"/> 1.Cement <input type="checkbox"/> 2.Epoxy resin <input type="checkbox"/> 3.Others <input type="checkbox"/> 4.None
	4) steel pipe	<input type="checkbox"/> 1.Cement <input type="checkbox"/> 2.Epoxy resin <input type="checkbox"/> 3.Others <input type="checkbox"/> 4.None
D.	Leak rate	_____ %
E.	Leakage control measures	<input type="checkbox"/> 1.implemented <input type="checkbox"/> 2.no

F.	Use of split repair sleeves for leak repairs	<input type="checkbox"/> 1.yes	<input type="checkbox"/> 2.no
----	--	--------------------------------	-------------------------------

(9) Maintenance of Service Installations

A.	Service method	<input type="checkbox"/> 1.direct connection <input type="checkbox"/> 2.tank system <input type="checkbox"/> 3.combination of direct connection and tank system
B.	Service type	<input type="checkbox"/> 1.individual connection <input type="checkbox"/> 2.common tap system
C.	Service pipe material	<input type="checkbox"/> 1.lead <input type="checkbox"/> 2.copper <input type="checkbox"/> 3.steel pipe <input type="checkbox"/> galvanized steel pipe <input type="checkbox"/> lined steel pipe <input type="checkbox"/> stainless steel pipe <input type="checkbox"/> 4.iron pipe <input type="checkbox"/> gray cast iron pipe <input type="checkbox"/> ductile iron pipe <input type="checkbox"/> 5.PVC pipe <input type="checkbox"/> 6.polyethylene pipe <input type="checkbox"/> 7.asbestos cement pipe <input type="checkbox"/> 8.other ()
D.	Service pipe diameter	<input type="checkbox"/> 13mm <input type="checkbox"/> 20mm <input type="checkbox"/> 25mm <input type="checkbox"/> 30mm <input type="checkbox"/> 40mm <input type="checkbox"/> 50mm <input type="checkbox"/> 75mm <input type="checkbox"/> 100mm <input type="checkbox"/> 125mm <input type="checkbox"/> 150mm <input type="checkbox"/> 200mm <input type="checkbox"/> 250mm <input type="checkbox"/> 300mm
E.	Connection methods of service lines to distribution mains	<input type="checkbox"/> 1.direct tapping <input type="checkbox"/> 2.corporation stop with saddle <input type="checkbox"/> 3.plit tapping sleeve <input type="checkbox"/> 4.other ()
F.	Storage of drawings	<input type="checkbox"/> 1.yes (<input type="checkbox"/> paper <input type="checkbox"/> microfilm) <input type="checkbox"/> 2.no
G.	Water meters	<input type="checkbox"/> 1.yes (%) <input type="checkbox"/> 2.no
H.	Meter type	<input type="checkbox"/> 1.inferential <input type="checkbox"/> 2.analog <input type="checkbox"/> 3.digital
I.	Repair of service pipe leaks	
	1) Please list main causes of leaks.	1. 2.
	2) Method of repair	<input type="checkbox"/> 1.by direct staff <input type="checkbox"/> 2.by subcontractors

Note: Applications without a duly completed Inception Report and Questionnaire shall not be accepted.

ANNEX III

Date	Time	Type	Subject	Organization	Place to Visit Phone No.	Place to Stay
				Position & Organization		
	15:00 16:30		Consultation	OMWB		
28	TUE	AM	P	Maintenance of Service Installations (Water Meters)	Water Service Installation Sec. (OMWB)"	Osaka Water Supply Technical Training C
		PM	L	Maintenance of Service Installations (Outline)	Water Service Installation Sec. (OMWB)	Osaka Water Supply Technical Training Center, Osaka
29	WED	AM	O	Observation of Water Works Related Material & Equipment (Pipes & Tubes)	OWGS	Ritto Plant, Sekisui Chemical Co., Takatsuki
		PM		Pump Factory Visit (Observation)	Facility Maintenance Center	Torishima Pump Mfg., Takatsuki
30	THU		P	Service Installation Works(Various Techniques for branching, corporation tap, etc.)	Western Waterworks Maintenance Center	Osaka Water Supply Technical Training Center, Osaka
31	FRI		P	Service Installation Works(Split sleeves, small pipes disassembling)	Northern Waterworks Maintenance Center (Toyosato Branch)	"
8/1	SAT		N	Holiday		"
2	SUN		N	Holiday		"
3	MON	AM	D	Discussion on Distribution & Service Facility Issues	OMWB	WTC
		PM	D	Preparation of Action Plan	JICA	JICA, OSAKA
4	TUE		D	Preparation of Action Plan	JICA	JICA, OSAKA
5	WED		D	Action Plan Presentation & Discussion	OMWB	WTC(8F), Osaka
6	THU			Closing Ceremony at OMWB, Interview, Farewell Party	Personnel & Human Resource Development Sec.(OMWB)	WTC(8F), Osaka
7	FRI			Evaluation Meeting and Closing Ceremony		JICA, OSAKA
8	SAT			Departure		"

Organizations Concerned:

Osaka International Center (JICA, OSAKA)
Japan International Cooperation Agency (JICA)
25-1, Nishi Toyokawa-cho, Ibaraki City, Osaka 567-0058
Osaka 567-0058

Osaka Municipal Waterworks Bureau (OMWB)
1-14-16 Nanko-kita, Suminoe-ku, Osaka City, Osaka 559-0034

Osaka Water General Service Co., Ltd. (OWGS)
(OMWSA)

Welcome to JICA Osaka

Osaka International Centre of Japan International Cooperation Agency (JICA Osaka) extends a hearty welcome to all JICA participants.

1. Location of the centre in the Kansai region

JICA Osaka is located in Ibaraki City, Osaka prefecture, in the heart of the Kansai region. Ibaraki lies close to the ancient cultural centers of Kyoto and Nara, and to the commercial, industrial and economic center of Osaka, and the city of Kobe.

2. Orientation Programme & Japanese Language Course

(1) The four days after arrival at JICA Osaka are dedicated to an orientation programme, during which participants are introduced to JICA Osaka and its facilities, attend lectures on Japan's economy, society and culture, and participate in an international exchange programme with local communities.

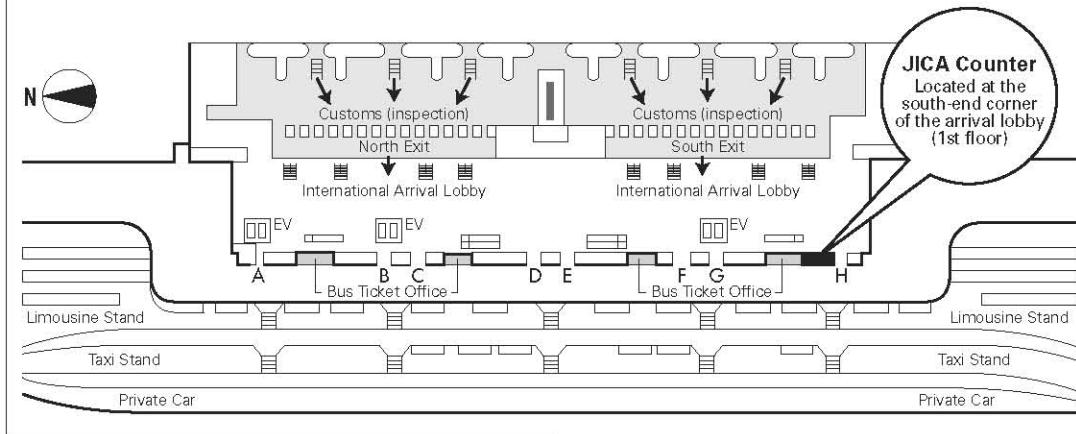
(2) It is desirable that participants acquire basic Japanese daily conversation for use in communication with training institution personnel and in other situations outside the scope of their technical training. JICA Osaka therefore offers:

- 1 an intensive Japanese language course as an integral part of the training programme in designated courses
- 2 an optional Japanese language course held in the evenings

3. Weekend Recreational Programme

Occasionally, at the weekends, JICA Osaka, in concert with community groups, organizes a programme of recreational activities and exchange events, including introductions to flower arrangement, tea ceremony, kimono wearing, handicrafts, and folk dancing, and visits to Japanese homes.

Map of JICA Counter in Kansai International Airport (KIX)



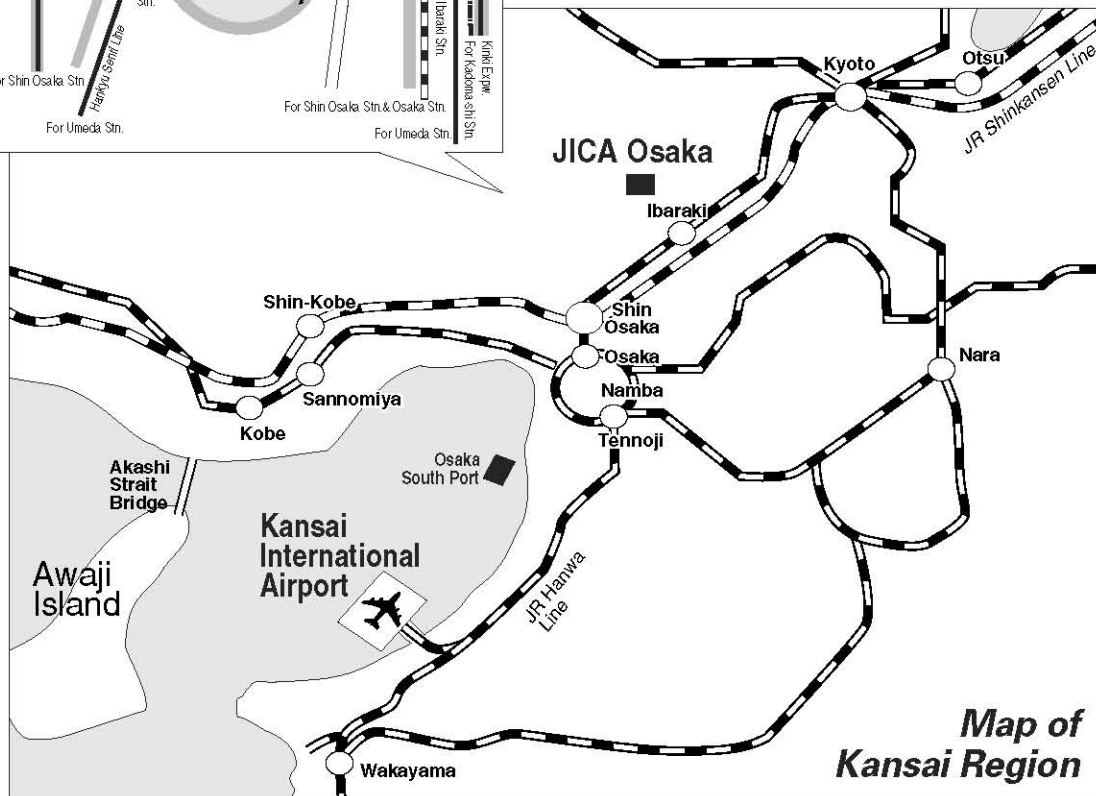
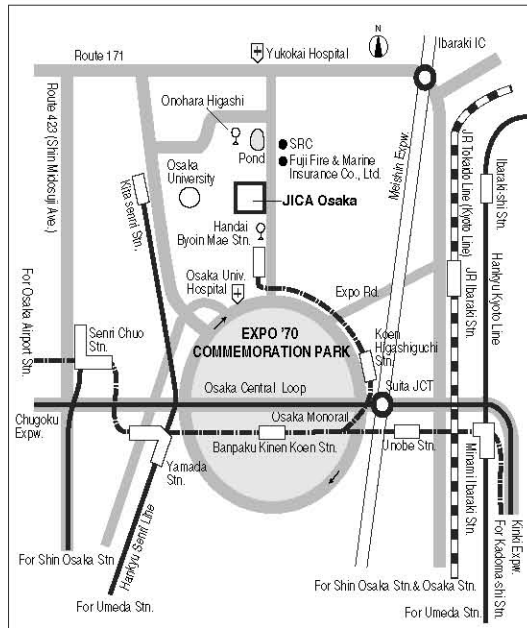
Upon arrival, participants should follow the procedure below:

1. Ride on Wing Shuttle (red elevated tram).
2. Pass through Immigration.
3. Collect baggage and pass through Customs Inspection.
4. Go to the JICA Counter located at the south-end corner of the arrival lobby (1st floor).

The staff at the JICA Counter will provide participants with a limousine bus ticket to Osaka Station (alight at Hotel New Hankyu).

At Osaka Station, a representative of the travel agency designated by JICA will meet the participant. The participant will be taken to JICA Osaka by taxi (with a taxi ticket), which takes approximately 30 minutes.

Map of the JICA Osaka Vicinity



Map of Kansai Region



CORRESPONDENCE

For enquiries and further information, please contact the JICA office or the Embassy of Japan. Further, address correspondence to:

JICA Osaka International Center (JICA OSAKA)

Address: 25-1 Nishi-Toyokawa-cho, Ibaraki, Osaka 567-0058, Japan

TEL: +81-72-641-6900 FAX: +81-72-641-6910