

GENERAL INFORMATION
ON
TRAINING PROGRAM
FOR YOUNG LEADERS
2010
Latin American Countries (Spanish)

Course Title: Urban Environmental Management
都市環境管理

Course No.: J1040037

Project No.:1098037

Duration: August 23, 2010 – September 9, 2010

THE GOVERNMENT OF JAPAN

JAPAN INTERNATIONAL COOPERATION AGENCY



GENERAL INFORMATION
ON
TRAINING PROGRAM FOR YOUNG LEADERS
2010
Latin American Countries (Spanish)

1. Training Program for Young Leaders

The “Training Program for Young Leaders” is conducted by JICA (the Japan International Cooperation Agency) under a technical cooperation scheme of the Government of Japan, with the purpose of promoting human resource development in developing countries.

Under the program, young leaders, who will become nation-building leaders in the future, are invited to Japan for 18 days to be provided with opportunities to:

- 1) develop their specialties through experiencing and learning technologies and skills in Japan, and
- 2) increase their willingness to resolve issues on their own

2. Course Outline

Please see Appendix 1 and Appendix 2.

3. Qualifications of Applicants

All applicants must:

- a. be nominated by the Government of each participating country in line with the procedures mentioned in 4-(1) below.
- b. be involved in a field corresponding to the course mentioned in Appendix 1.
- c. be from twenty (20) to thirty-five (35) years of age and be expected to become leaders in their specialized fields in the future.
- d. have a reasonable command of English and good command of spoken and written Spanish.
- e. be in good health, both physically and mentally, for participation in the program.

Note: i) Applicants are requested to submit the Medical History Questionnaire included in the Application Form mentioned in 4-(1) below.

- ii) Pregnancy: Pregnant participants are urgently requested to complete the

required procedures before departure in order to minimize any risk to their health. These procedures include ①a letter of the participant's consent to bear economic and physical risks ②a letter of permission from the participant's supervisor ③a letter of consent from your Embassy in Japan, ④a medical certificate. Please ask National Staffs in the JICA office for details.

f. not be serving in the military.

g. not have, in principle, made any previous visits to Japan.

4. Procedures for Application

(1) The Government of each participating country will take the necessary measures to nominate appropriate applicants for the program, and will forward to the JICA representative office in each participating country three (3) copies of the specified Application Form for each applicant not later than June 23, 2010.

Note: The Government of each participating country is requested to nominate some substitute candidates in case of disqualification of nominated candidates or unexpected vacancies.

(2) The Government of Japan will inform the Government of (country name) through the JICA representative office whether or not the nominee's application has been approved not later than July 23, 2010.

5. Rules and Regulations

(1) Participants must have an entry visa for Japan, which will be issued by the diplomatic mission of Japan in each participating country.

(2) Participants are requested to confirm the validity of visas for any third countries necessary for travel to and from Japan.

(3) Participants are required by JICA to arrive at the designated place in each participating country on the date designated after confirmation of their acceptance as mentioned in 4-(2) above. Final confirmation of the place and date will be performed by the JICA representative office located in each participating country.

(4) Participants should strictly adhere to the program schedule.

(5) Participants may not be accompanied by any member of their family during the program.

(6) Participants are requested to follow the return trip schedule designated by JICA.

6. Allowances and Expenses

The government of Japan will pay the following allowances and cover the following expenses through JICA in accordance with relevant laws and regulations.

(1) Round-trip air ticket between an international airport designated by JICA and Japan.

Note: i) Taxes and fees that may be incurred during the participants' trip such as airport tax, departure tax or, transit tax etc. will not be paid by JICA.

ii) Excess baggage charges will not be paid by JICA.

iii) In some cases, participants visiting or leaving Japan may be required to obtain visas for third countries. Where this is the case, it shall be the participants' responsibility to obtain and pay for these visas. JICA will not pay any costs for third country visas.

iv) JICA is not responsible for the following expenses:

- Excess baggage charge
- Compensation for lost and/or damaged luggage
- Hotel no show charge at transit airport
- Lost ticket fee

(2) Other allowances:

- a. Outfit allowance
- b. Shipping allowance
- c. Living allowance
- d. Accommodation allowance
- e. Stop-over allowance (when expenses incurred due to a stop-over in a third country are not paid by the airline company)

Note: i) The specific amounts for each allowance will be announced after applicants are officially accepted.

ii) Stop-over allowances will be paid to participants only in the following cases:

- participant has to obtain a Japanese visa in a third country;
- participant has to stay in a third country for over six (6) hours due to a flight change.
- participant is required to show evidence specifying the accommodation where s/he stayed when s/he stays in a third country for over six hours either before or after midnight, but not over midnight.

iii) A participant may receive his/her stop-over allowance at any of the following places:

- at the JICA office in the country of departure, provided there is a JICA office in that country;
- at the JICA office in the third country, provided there is a JICA office in that country and no JICA office in the country of departure;
- in Japan after the participant's arrival, provided there is no JICA office in either the country of departure or the third country (in all cases, receipts must be submitted; however, no payment will be made for any amount exceeding the stipulated allowance amount).

(3) Free medical care for participants who become ill after arrival in Japan

Note: Costs related to pre-existing illness, pregnancy and dental treatment are **NOT** included as free care.

7. Other Matters

(1) Participants will receive information about the trip to Japan, conditions relating to the program, and other matters. A brochure, "KENSU-IN GUIDE BOOK", and a Japanese language textbook, "NIHONGO 21," will be provided to each participant before departure for Japan.

(2) Representatives of each country will be asked to present a "Country Report" on the main issues concerning the group's specialty during the Specialized Program. It is advisable for participants to prepare their Country Reports in advance. As presentation time is not necessarily particularly long, a brief but well structured report is advisable (e.g., not more than four pages of A4 size paper).

(3) It is suggested that Participants bring some materials to introduce their home country and profession.

(4) For enquiries and further information concerning the program, please contact the following offices.

For El Salvador

JICA EL SALVADOR OFFICE

Oficina Residente Representativa de JICA : TORRE FUTURA 8 nivel 803, Calle del .Mirador y 87 Avenida Norte, Colonia Escalon, San Salvador, EL SALVADOR, C.A.

Postal Address : Oficina Residente Representativa de JICA : Apartado Postal NO.01-114, San Salvador, EL SALVADOR, C.A.

Tel : (503) 22508700 / Fax : (503) 22630935

For Cuba

Cuba Embajada del Japón

Centro de Negocios Miramar, Edi, 1-5 to. Piso, Ave. 3ra, Esq, a 80, Miramar, Playa, Habana, Cuba (Apartado No. 752)

Postal Address : Embajada del Japon en Cuba Gaveta Postal 6673 Habana 6 C.P.10600 Cuba

Tel : (53-7) 204-3355 / Fax : (53-7) 204-8902

JICA MEXICO OFFICE

Ejército Nacional #904 Piso 17, Col. Palmas Polanco, MEXICO, D.F., C.P.11560

Tel : (52-55) 5557-9995 / Fax : (52-55) 5395-0063

For Guatemala

JICA GUATEMALA OFFICE

Oficina de JICA Guatemala 18 Calle, 5-56, Zona 10, Guatemala Edificio UNICENTRO 12 Nivel Oficina 1203, GUATEMALA

Postal Address : Oficina de Voluntarios Japoneses Apartado Postal No.269-A, GUATEMALA

Tel : (502) 23819400 / Fax : (502) 23819413

For Costa Rica

JICA COSTA RICA OFFICE

Oficentro Ejecutivo del Mall San Pedro, 6to piso, San Pedro de Montes de Oca, San Jose, COSTA RICA

Postal Address : Apartado Postal #666-2010, Zapote, San José, COSTA RICA A.C.

Tel : (506) 2253114 / Fax : (506) 2342384

For Chile

JICA CHILE OFFICE (AGENCIA DE COOPERACION INTERNACIONAL DEL JAPON)

Av. Apoquindo 3650, Of.704, Las Condes, Santiago, CHILE

Postal Address : Casilla 16137, Correo 9, Santiago, CHILE

Tel : (56-2) 208-9990 / Fax : (56-2) 228-8758

For Bolivia

JICA BOLIVIA OFFICE

Av. Victor Sanjines No.2678 Edificio BARCELONA Piso 5, La Paz, BOLIVIA

Postal Address : Cajon Postal No.11447, La Paz, BOLIVIA

Tel : (591-2) 242-2221 / Fax : (591-2) 211-4278

For Mexico

JICA MEXICO OFFICE

Ejército Nacional #904 Piso 17, Col. Palmas Polanco, MEXICO, D.F., C.P.11560

Tel : (52-55) 5557-9995 / Fax : (52-55) 5395-0063

For Japan

JICA OSAKA International Center

25-1 Nishi-Toyokawa-cho, Ibaraki-shi, Osaka 567-0058, JAPAN

Tel : 81(*)-72(**)-641-6900 / Fax : 81(*)-72(**)-641-6910

(where “81” is the country code for Japan, and “72” is the local area code)

E-mail : jicaosic@jica.go.jp

URL: <http://www.jica.go.jp/english/contact/domestic/>

Appendix 1: Specific information on the program

Appendix 2: Tentative schedule for the program

Appendix 1

Course No.	J10-40037
Course Title	Urban Environmental Management for Latin American Countries (Spanish)
Duration	August 23, 2010–September 9, 2010
Number of Participants	11 (El Salvador 2, Cuba 1, Guatemala 1, Costa Rica 2, Chile 1, Bolivia 1, Mexico 3)
Language	Spanish
Target Group	Central/Local officers engaged with urban environmental management, or staff of environmental organization.
Objectives	<ul style="list-style-type: none"> ▪ To gain basic knowledge on environmental administration and measures taken in Japan, especially in Osaka. ▪ To learn from Japanese experience or gain an understanding of Japanese social background in environmental field through visits to the field site and discussions with the concerned parties.
Outline of the Program	<ul style="list-style-type: none"> ▪ Outline of environmental administration. ▪ Environmental policy and administration by local governments. ▪ Environmental conservation and education.
Accommodation	<p>Osaka International Center, JICA</p> <p>*This accommodation is tentative and the schedule is subject to change without notice.</p>

Welcome to JICA Osaka

Osaka International Centre of Japan International Cooperation Agency (JICA Osaka) extends a hearty welcome to all JICA participants.

1. Location of the centre in the Kansai region

JICA Osaka is located in Ibaraki City, Osaka prefecture, in the heart of the Kansai region. Ibaraki lies close to the ancient cultural centers of Kyoto and Nara, and to the commercial, industrial and economic center of Osaka, and the city of Kobe.

2. Orientation Programme & Japanese Language Course

(1) The four days after arrival at JICA Osaka are dedicated to an orientation programme, during which participants are introduced to JICA Osaka and its facilities, attend lectures on Japan's economy, society and culture, and participate in an international exchange programme with local communities.

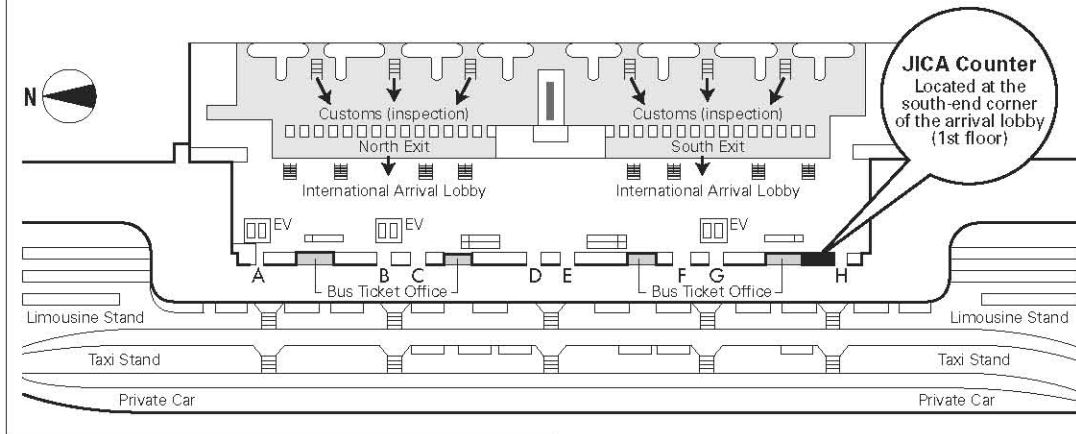
(2) It is desirable that participants acquire basic Japanese daily conversation for use in communication with training institution personnel and in other situations outside the scope of their technical training. JICA Osaka therefore offers:

- 1 an intensive Japanese language course as an integral part of the training programme in designated courses
- 2 an optional Japanese language course held in the evenings

3. Weekend Recreational Programme

Occasionally, at the weekends, JICA Osaka, in concert with community groups, organizes a programme of recreational activities and exchange events, including introductions to flower arrangement, tea ceremony, kimono wearing, handicrafts, and folk dancing, and visits to Japanese homes.

Map of JICA Counter in Kansai International Airport (KIX)



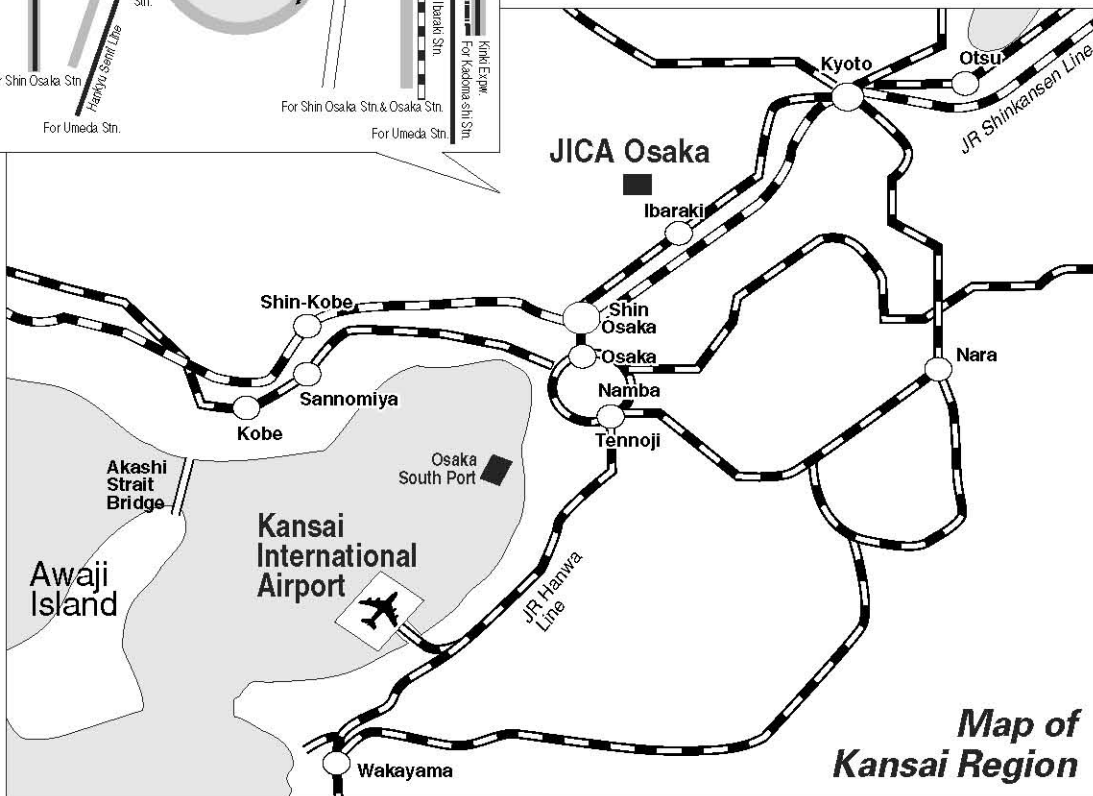
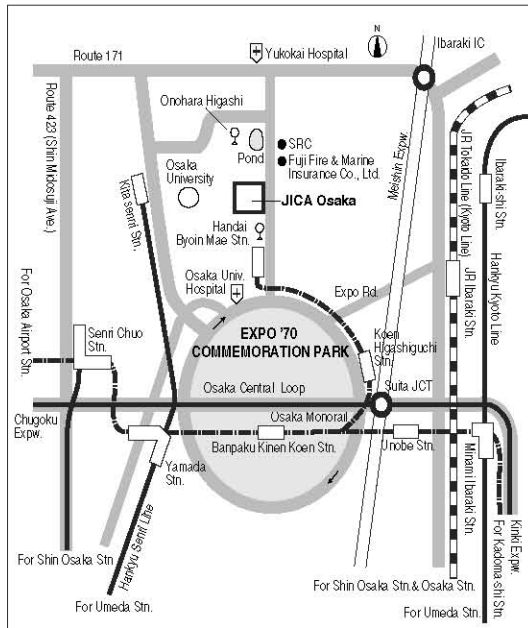
Upon arrival, participants should follow the procedure below:

1. Ride on Wing Shuttle (red elevated tram).
2. Pass through Immigration.
3. Collect baggage and pass through Customs Inspection.
4. Go to the JICA Counter located at the south-end corner of the arrival lobby (1st floor).

The staff at the JICA Counter will provide participants with a limousine bus ticket to Osaka Station (alight at Hotel New Hankyu).

At Osaka Station, a representative of the travel agency designated by JICA will meet the participant. The participant will be taken to JICA Osaka by taxi (with a taxi ticket), which takes approximately 30 minutes.

Map of the JICA Osaka Vicinity



Map of Kansai Region

SCHEDULE FOR THE PROGRAM (Tentative)

Month/Day	Content	Place	Purpose
8/23	Arrival in Japan	JICA Osaka	• To learn about Japanese Society
24	Briefing, Opening Ceremony, Orientation	JICA Osaka	
25	L : Lectures on Japanese society	JICA Osaka	
26	L : Environmental Measures Taken in Japan L : History of Hazardous Metal Pollution	JICA Osaka	• To develop knowledge and awareness on environmental issues
27	L : Water Pollution in Osaka L : Waste Treatment in Osaka	JICA Osaka	
28	Free Time		
29	Free Time		
30	L : Experience of Air Pollution in Osaka L : Noise/Vibration/Odor Issues in Osaka	JICA Osaka	
31	O : Private Sewerage System (Johkaso) O : Natural Farm		
9/1	O : Case Study of Community-based Eco Project L : Lakes & Ponds and their Conservation O : Lake Biwa Museum	Shiga Prefecture	
2	L & O : Sewerage Management of Osaka City		
3	E : Exchange with Students O : Environmental Museum	GEC	
4	Free Time		
5	Free Time		
6	L : Climate Change Issues Preparation of Action Plan	JICA Osaka	• To confirm the knowledge gained through the Program
7	Presentation of Action Plan Evaluation	GEC	
8	Closing Ceremony	JICA Osaka	• To evaluate the Training Program
9	Departure from Japan		

L : Lecture, O : Observation & Visits, E : Exchange
GEC : Global Environment Centre Foundation

*This program is tentative and the schedule is subject to change without notice.

